

wallbox 



PULSAR MAX

Going electric just got easier.

PULSAR MAX

Tougher. Simpler. Smarter.

Pulsar Max is the smart home charger specially designed to unlock time, money and energy savings for everyday electric vehicle drivers. Get top charging speeds while minimizing your daily energy use, so you can enjoy your electric vehicle to the fullest.



✓ Powerful, fast charging

Up to 8x faster charging

✓ Easy installation

New easy-to-install design reduces installation time and costs

✓ Save money and energy

Avoid high energy tariffs with smart charging schedules

✓ Solar charging compatible

Take full advantage of your solar panels

✓ Ultra-Fast Advanced CPU

High processing speeds and future proof software, built in-house specifically for charging.

✓ Weather and dust protection

Perfect for indoor or outdoor installation, with a scratch-resistant matte finish




PULSAR MAX


Even more to love

 **Fast**
Up to 22kW of power

 **Compact**
Just 1.3kg

 **Compatible**
Options for any EV
and any home

 **Protected**
Enjoy a 3-year warranty with
options to extend

 **Hands-Free**
Control via your Amazon
Alexa or Google Assistant*

 **Connected**
Control from the myWallbox
app via Wi-Fi or Bluetooth



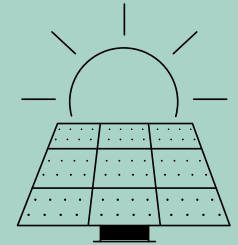
PULSAR MAX

Upgrade your experience with Wallbox Energy Management Solutions

Enjoy even more sustainable, cost-efficient charging at home.

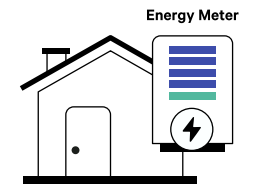
Eco-Smart Solar EV Charging

Use the surplus solar energy from your solar panels to charge your EV. Choose to charge with 100% solar energy, or a mix of solar and grid energy.*



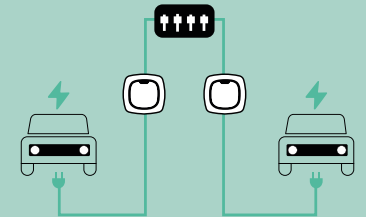
Power Boost Dynamic Load Balancing

Balance the available energy between your home and car, in real-time, so you can run your large appliances and still charge at high speeds! No need for costly upgrades to your electrical panel.*



Power Sharing Charge Multiple EVs

Install multiple chargers on the same circuit to distribute the available energy dynamically and charge all connected cars at once.**



**Both features available in Australia, New Zealand, UK, Ireland and Spain. Amazon Alexa is also available in France and Germany.*

Ask your sales representative how you can upgrade your smart charging system today.

**Power Meter required.
**Eco-Smart not compatible with Power Sharing.*

MYWALLBOX APP

Control at your fingertips with the myWallbox app

- Monitor the status of your charger and control it from anywhere.
- Get energy use and spending statistics in real-time.
- Secure your charger with remote locking and unlocking.
- Access all Energy Management Solution features.
- **NEW!** Activate Halo Light Standby so the light will stay off until you interact with the charger.



PULSAR MAX

Product Specifications

General Specifications

Cable Length:	5m (7m optional)
Charging Mode (IEC 61851-1):	Mode 3
Dimensions:	198 x 201 x 99mm (without cable)
Weight:	1.3kg (without cable)
Operating Temperature:	-25 °C to 50 °C
Storage Temperature:	-10 °C to 70 °C

User Interface & Communications

Connectivity:	WiFi, Bluetooth
Communication Platforms:	myWallbox, OCPP 1.6j

Electrical Specifications

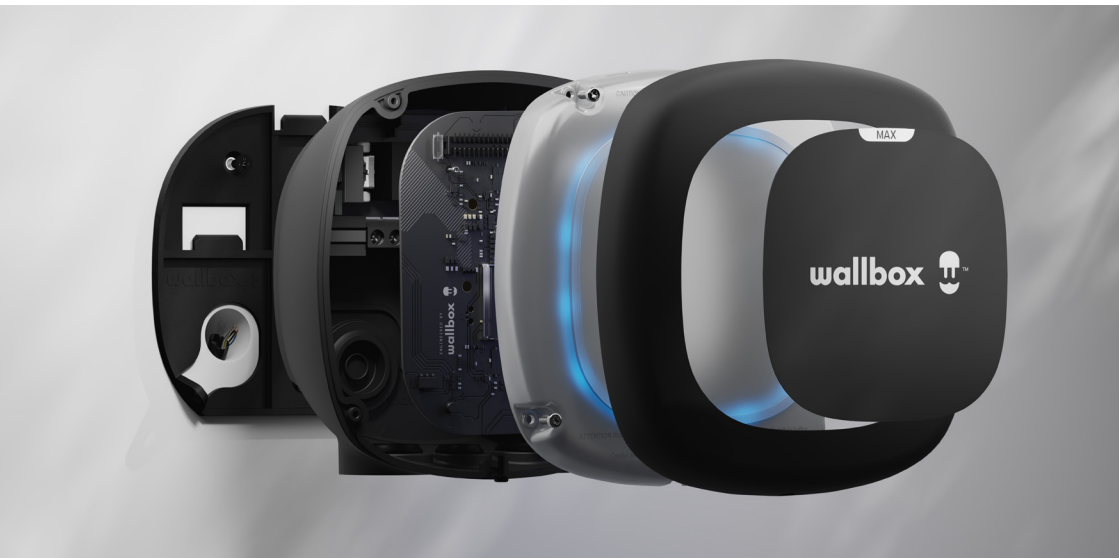
Rated Voltage AC ± 10%:	220-240 V / 380-440 V
Charging Power:	7.4 kW / 22 kW
Rated Current:	32 A (1P) / 32 A (3P)
Connector Type (IEC 62196-2):	Type 1 or Type 2
Cable Width:	up to 13 mm ²
Configurable Current:	from 6 A to rated current
Rated Frequency:	50 Hz / 60 Hz
Protection Rating:	IP55 / IK10
Surge Category:	CAT III
Residual Current Detection:	DC 6 mA
RCCB:	External RCCB Type A required



Save while you sleep with easy scheduling

myWallbox provides an off-peak charging schedule suggestion right at onboarding. Charge with energy that's cleaner and cheaper, depending on your energy provider and plan, with just one click.*

**Available in UK, Ireland, Australia, NZ, Spain and Norway.*





Distributed in NZ by



+64 9 274 3340 | EV@transnet.co.nz | www.evc.co.nz

www.wallbox.com

Copyright 2022, Wallbox Chargers S.L.